



Diode Laser

Hair Regrowth Therapy

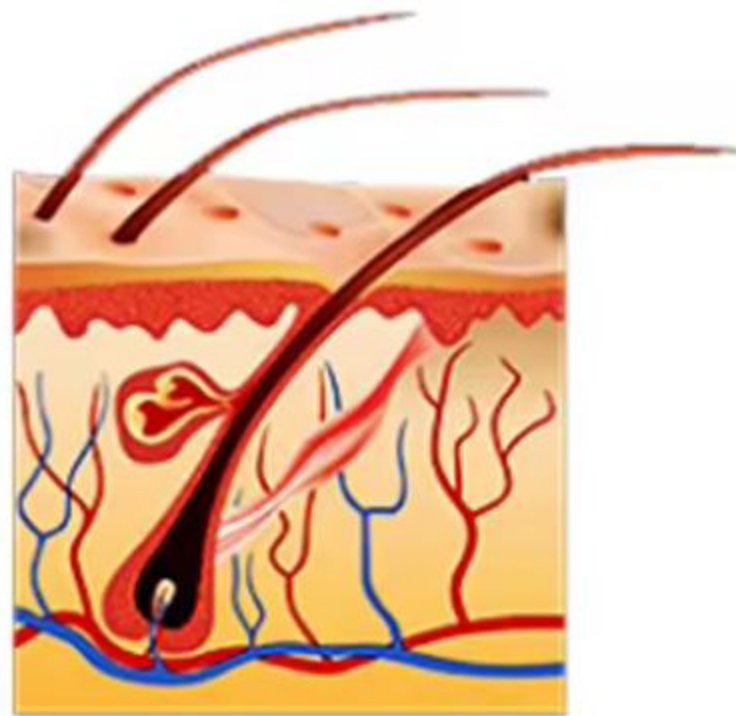
- ◆ 670nm Medical Grade Led, Low Level Laser Technology
- ◆ Active your hair follicles, enhance cell regeneration



670NM

Medical Grade Led, Low Level Laser Technology
Active your hair follicles, enhance cell regeneration

Before



Laser treatment



After





Hair care **3** quartet

Effectively solve the problem of hair loss



LLLT low energy laser

Scientific treatment of alopecia

No hidden danger

Worry free to prevent recurrence

Professional technology

240 laser lights

Energy self regulation

Partition intelligent adaptation

Non contact treatment

Microscopic examination

Scalp test

Hair regeneration

LLLT

Low energy laser irradiation technology was used

Using 5mW(0.005w) medical soft laser, compared with the traditional 10W power, 0 radiation, no side effects



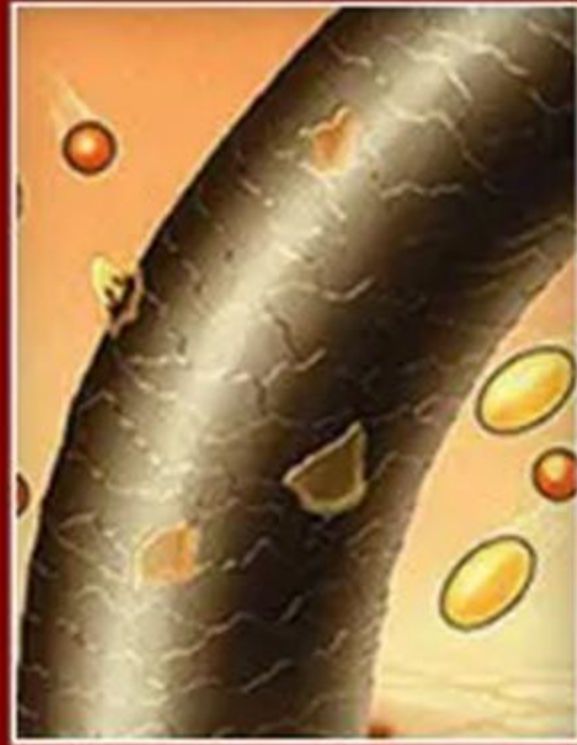
1. Hair care



2. Improve nutrition supply



3. Strong roots and healthy hair



4. Reduce hair loss





240PCS Laser Energy

New power injected into hair follicles

670nm gold wavelength cold wave laser

Each lamp bead only
0.005W
power



security

Laser hair generator



Non contact treatment



Adjustable head shape



Treat with ease and enjoy
the results



APPLICATIONS

Hormonal hair loss

The patient's hairline is getting higher in adulthood due to hair loss. Hair loss started at the forehead and as the condition worsened, the hair on the top of the head also started to fall out.



Seborrheic hair loss

Caused by excessive grease secretion from the scalp, it can manifest as greasy, fine and limp hair and increased dandruff, itching and other symptoms, and is even accompanied by an odour.



Patchy baldness

Sudden onset, etiology related to psychological factors. Hair may be lost in localised patches without conscious symptoms, and total baldness may occur in individual patients.



Endocrine Hair Loss

Hormonal imbalance in the body, causing hair loss. Hair loss can also be caused by endocrine diseases such as hypothyroidism and hyperthyroidism.



TECHNICAL PARAMETERS:

Light color	Red (670nm +/- 5nm)
Power light	0 ~ 140mw (adjustable)
Time	1 ~ 60min (adjustable)
Energy	1 ~ 8 (adjustable)
Frequency	30 ~ 90Hz (adjustable)
Treatment panels	4pcs
Numbers of laser lamps	240pcs
Treatment area	170mm*170mm*4
Voltage	110V / 220V

